



Introduction

After 15 years serving the footwear industry, GTS is launching a new solution called SoftShoeStyle. A subscription-based solution, it is specifically designed for small to mid-sized footwear companies, multi-category retailers, and design offices that need a more affordable, less complex solution than traditional PLM packages. It's also a solution for the many footwear companies that are not in the position to commit the necessary financial and human resources to the implementation of an enterprise version of a PLM solution. Or those who may wish to take a more conservative approach to a change.

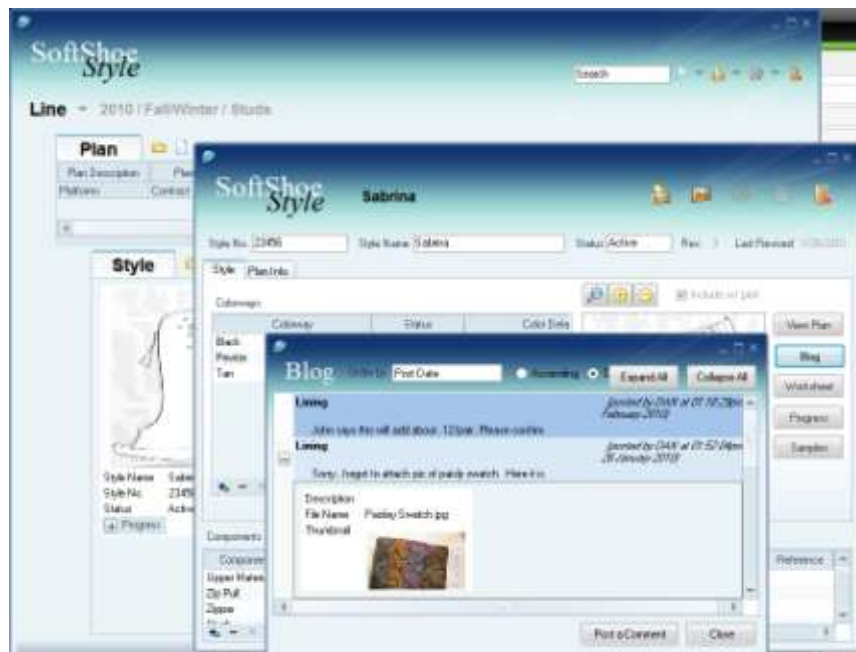
SoftShoe and SoftShoeStyle

SoftShoe is the flagship application of GTS. It is an interdepartmental solution with modules that fit the needs of each group involved in developing and bring product to market:

- Commercialization/Line Manager
- Product Development
- Materials
- Overseas Sampling
- Pricing / Costing
- PreProduction/Technical
- Production

SoftShoeStyle is a lighter version of SoftShoe. Many of the business processes and rules learned from providing SoftShoe are built into SoftShoeStyle. The focus is narrower, yet it provides the that SoftShoe. SoftShoeStyle provide an Internet-based collaborative environment for

- Line Builders/
Merchandisers
- Product Development
- Materials
- Sample Requests

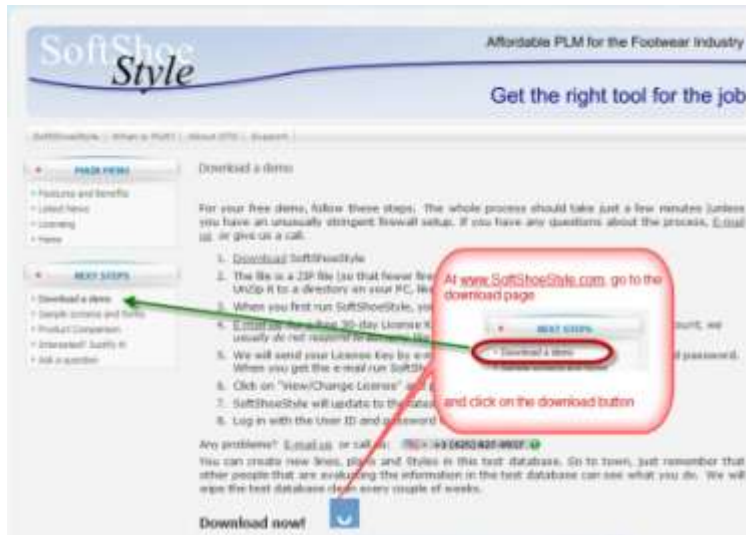




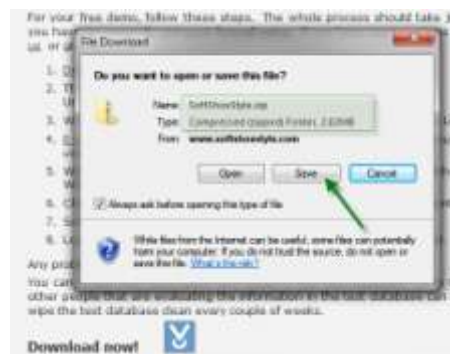
Installation

On your PC, create a directory called SoftShoeStyle, and unzip the file to that directory.

[Download SoftShoeStyle](#). Also available from our website at www.softshoestyle.com



The file is compressed into a ZIP file. This is because many firewalls prevent downloading of executable programs. The ZIP file contains only the file SoftShoeStyle.exe.



A couple of technical notes related to PC operating systems:

- Windows7 – you need to make sure that you have rights to the new directory. SoftShoeStyle creates some cache files in the new directory to speed processing.
- MAC – SoftShoeStyle’s client is Windows only at this time. You will need to run SoftShoeStyle in Windows mode on your MAC machine.



Starting SoftShoeStyle

Run the program: Do this by double-clicking on the file or using START and RUN.

Remember, SoftShoeStyle is windows-based so you will need to run in the Windows environment on your MAC

SoftShoe Style will ask for a License. Click to input a license and paste the attached file into the box (see below)

The software will automatically update itself if there is a new version

You can share this e-mail and license key with anyone. There are 2 restrictions:

- 1) A user can only be logged into the system once. You can share the password with other but you will only be able to log in one at a time.
- 2) There is an expiry for the demo (usually 30 days). Refer to our e-mail for details. Contact us if you think you need more time.



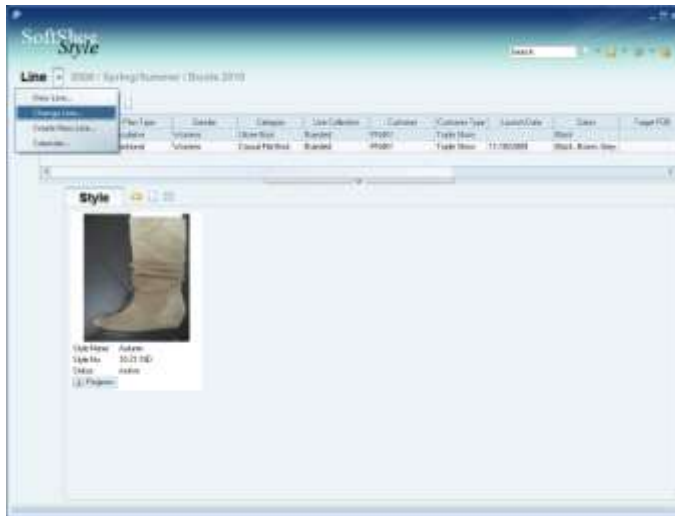




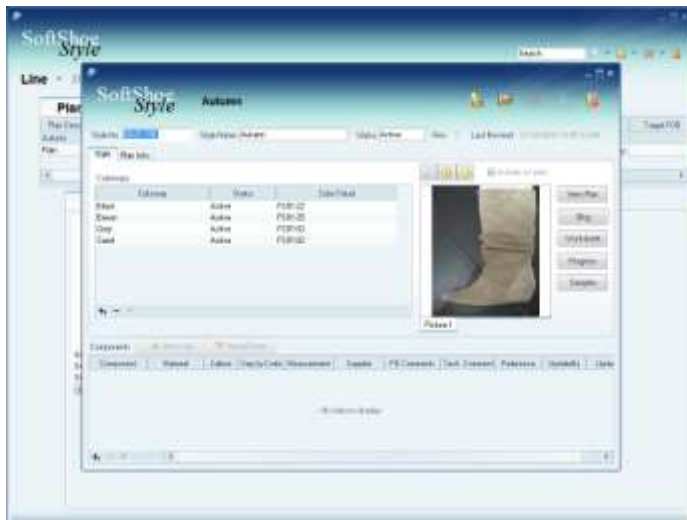
Now what?

Start of by selecting a Line in our demo database.

Select a Line and then select Card View next to Style

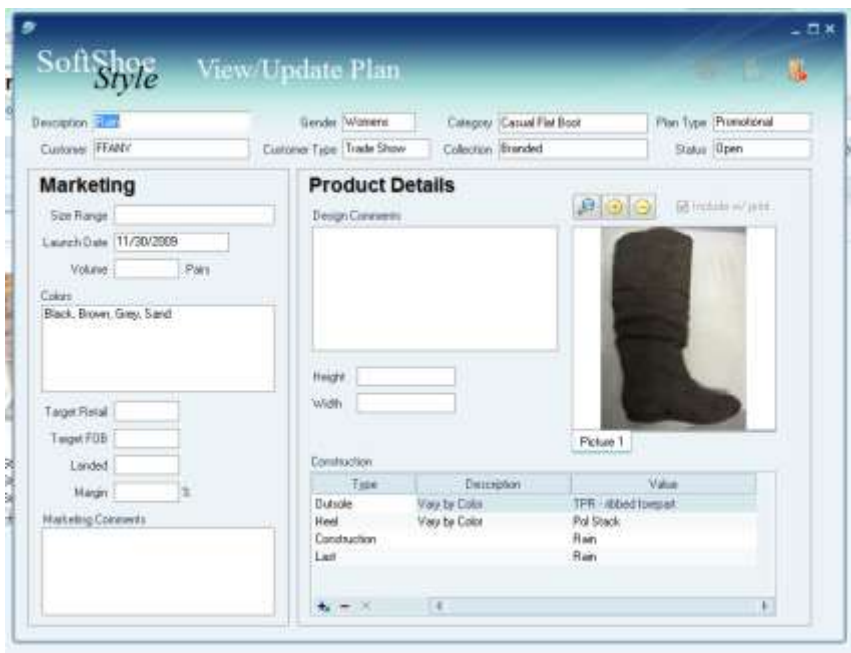
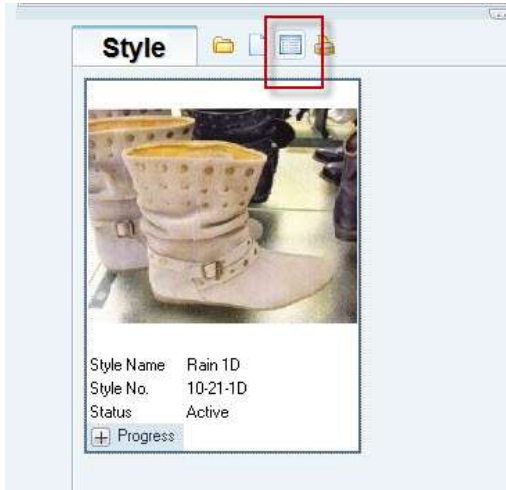


Double-click on any Plan to View the details.



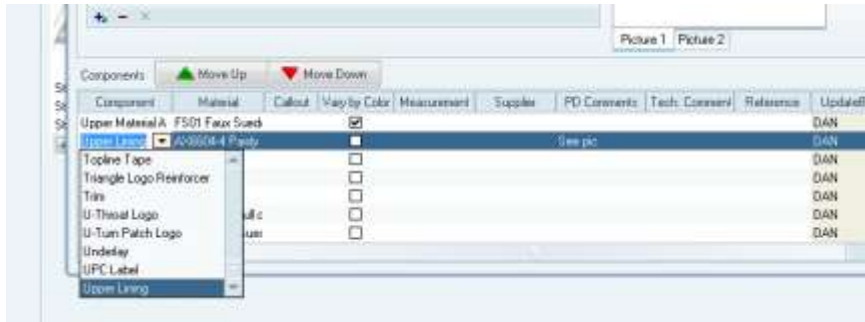


Double-click on any Spec to View details.

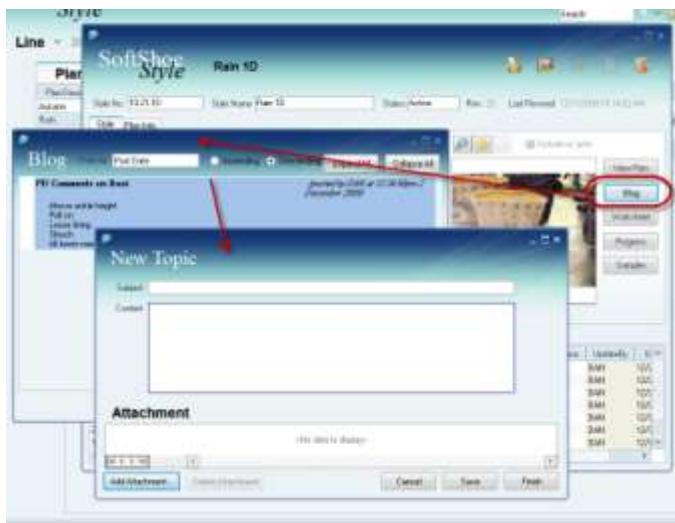




Try adding a component – select a material from the dropdown
Add another component but this time, type in your own material



Push the button “Blog” and add some comments, something about Pricing, Design details, your dinner Saturday night, etc.





Close the Blog and select Finance – view projected margin.



Close that screen and SAVE the changes you made.

Try printing the Spec

Or even e-mail the Tech Package to yourself. When you do this you can select which attachments in the blog should be added to the e-mail.

